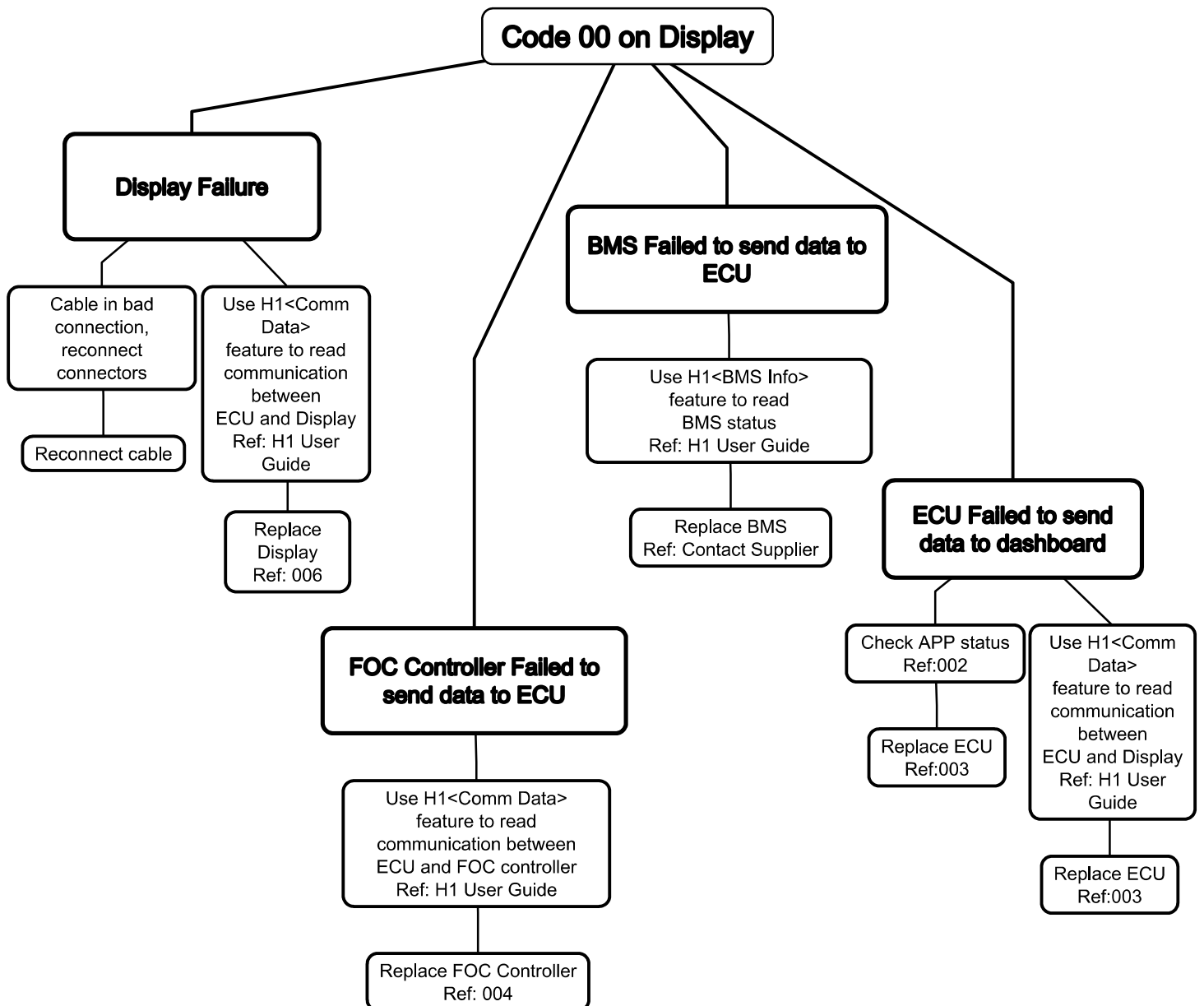


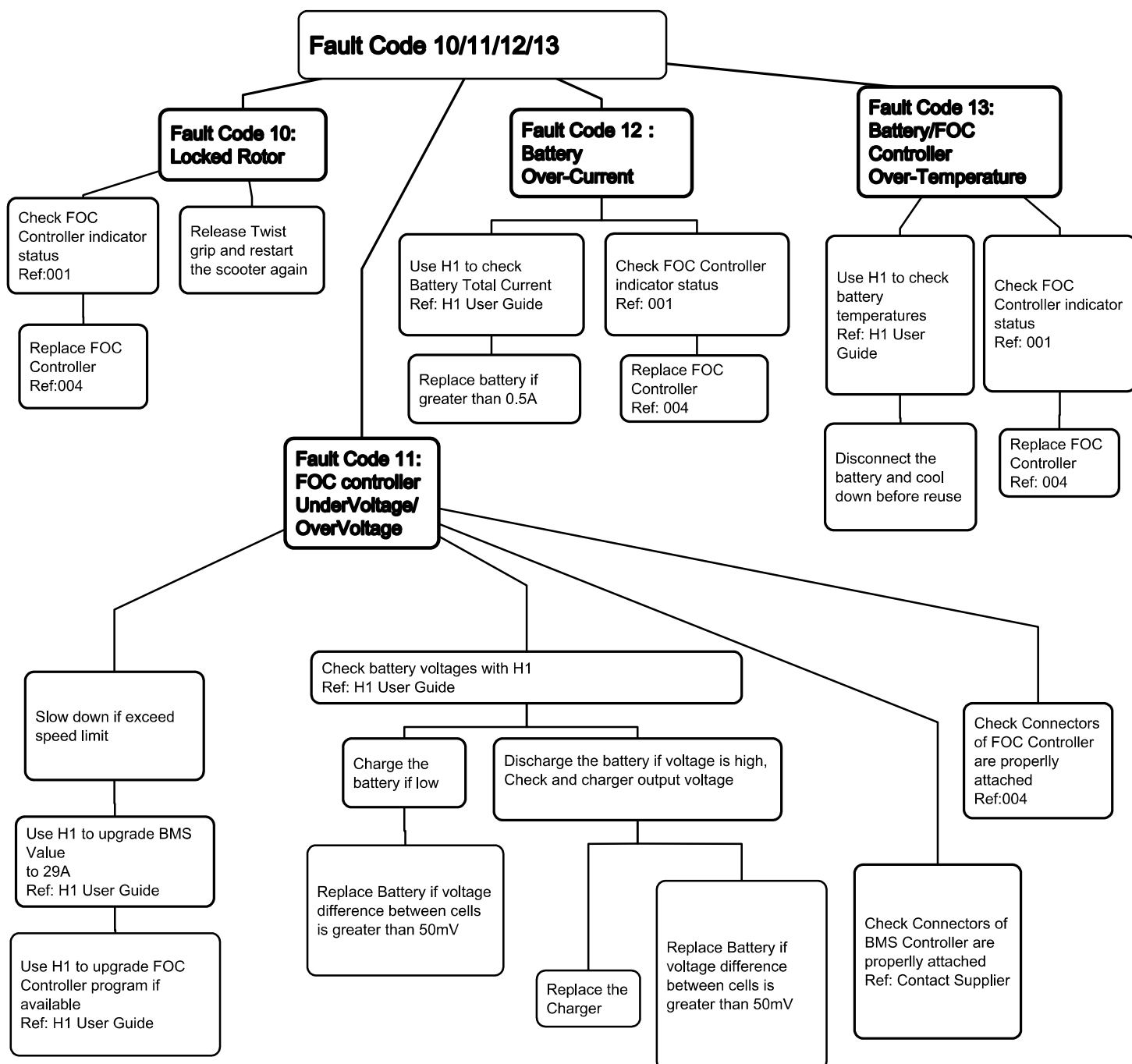


Diagnostic Code - 00 on display



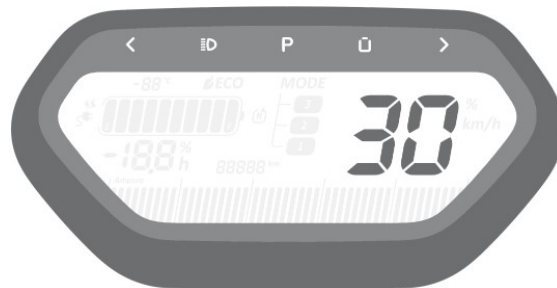


Diagnostic Code - 10/11/12/13 on display





Diagnostic Code - 30 on display



Fault Code 30: Battery Over-Charge Protection

Charger Failure

Try charging the battery with another Charger

Replace Charger

Battery Overcharged

Use H1 to check battery pack Total Voltage
Ref: H1 User Guide

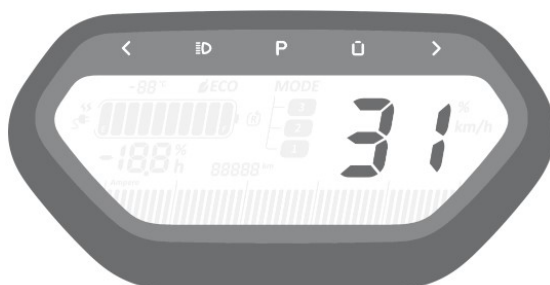
Discharge the battery if overcharged
Note: BMS may stop the charging process to protect battery cells, in cases if the battery can't be charged fully , please charge the battery again.

Use H1 to check single cell voltages
Ref: H1 User Guide

Replace the battery pack if difference in single cell voltages is greater than 50mV



Diagnostic Code - 31 on display



Fault Code 31 Charing Over-Current Protection

Charger Failure

Try charging the battery with another Charger

Replace Charger

Slow down if exceed speed limit

Use H1 to upgrade BMS Value to 29A
Ref: H1 User Guide

Use H1 to upgrade FOC Controller program if available
Ref: H1 User Guide



Diagnostic Code - 32 on display



Fault Code 32 Charging Prohibited at Low Temperature

Battery temperature sensors failure

Use H1 to check Temperature sensors
Ref: H1 User Guide

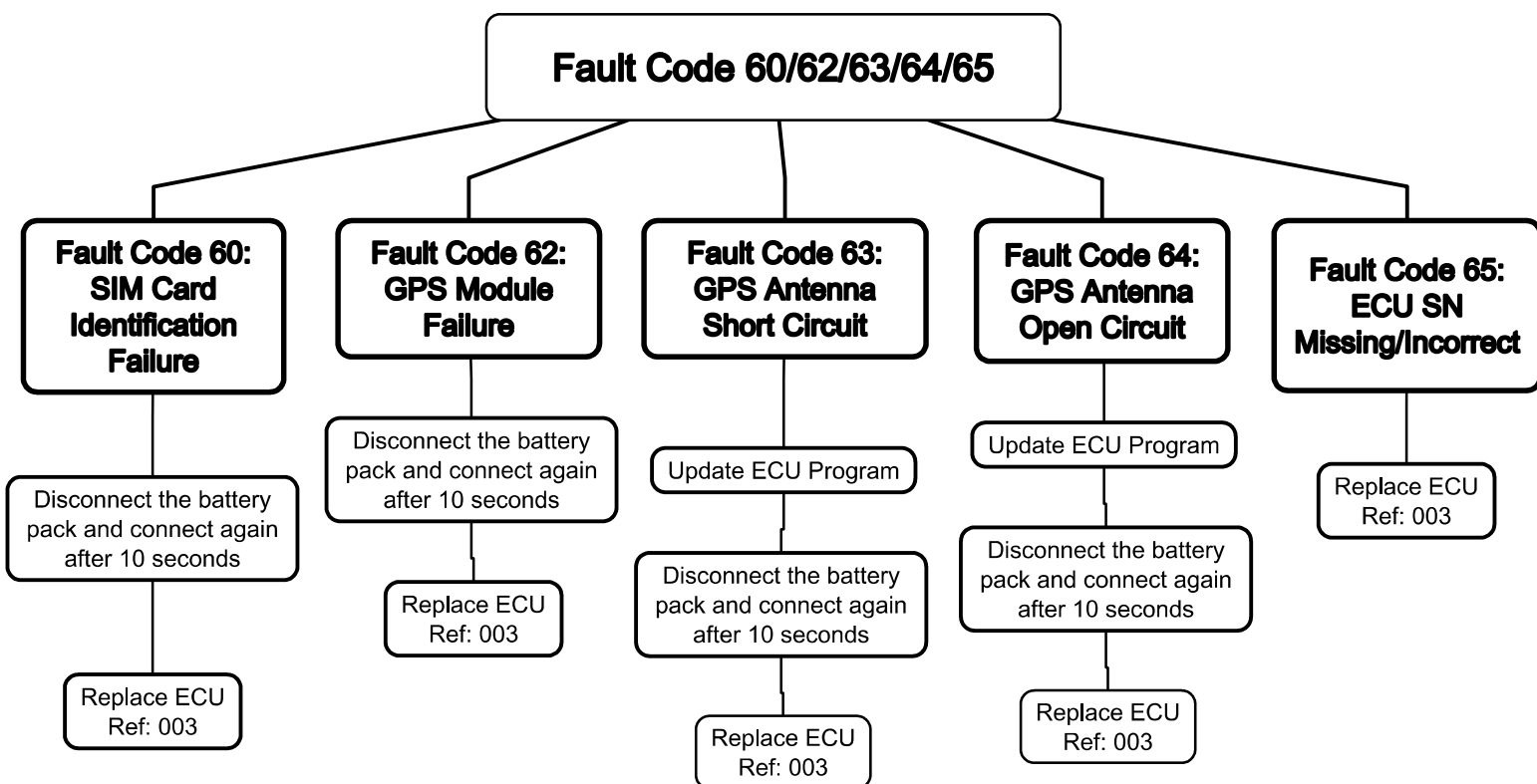
Replace the BMS if temperature is
imbalanced
Ref: Contact Supplier

Battery Temperature LOW (below-20°)

Take the battery pack indoor
until back to normal operating
temperature



Diagnostic Code - 60/62/63/64/65 on display





Diagnostic Code - 67 on display



Fault Code 67 Data Service(SIM Card)Unpaid/Inactivated/Low Signal Strength

Renew Top-up App Data Service

Log into App and follow instructions

SIM Card Unpaid/Inactivated

Activate the SIM card
Ref: please follow APP instruction

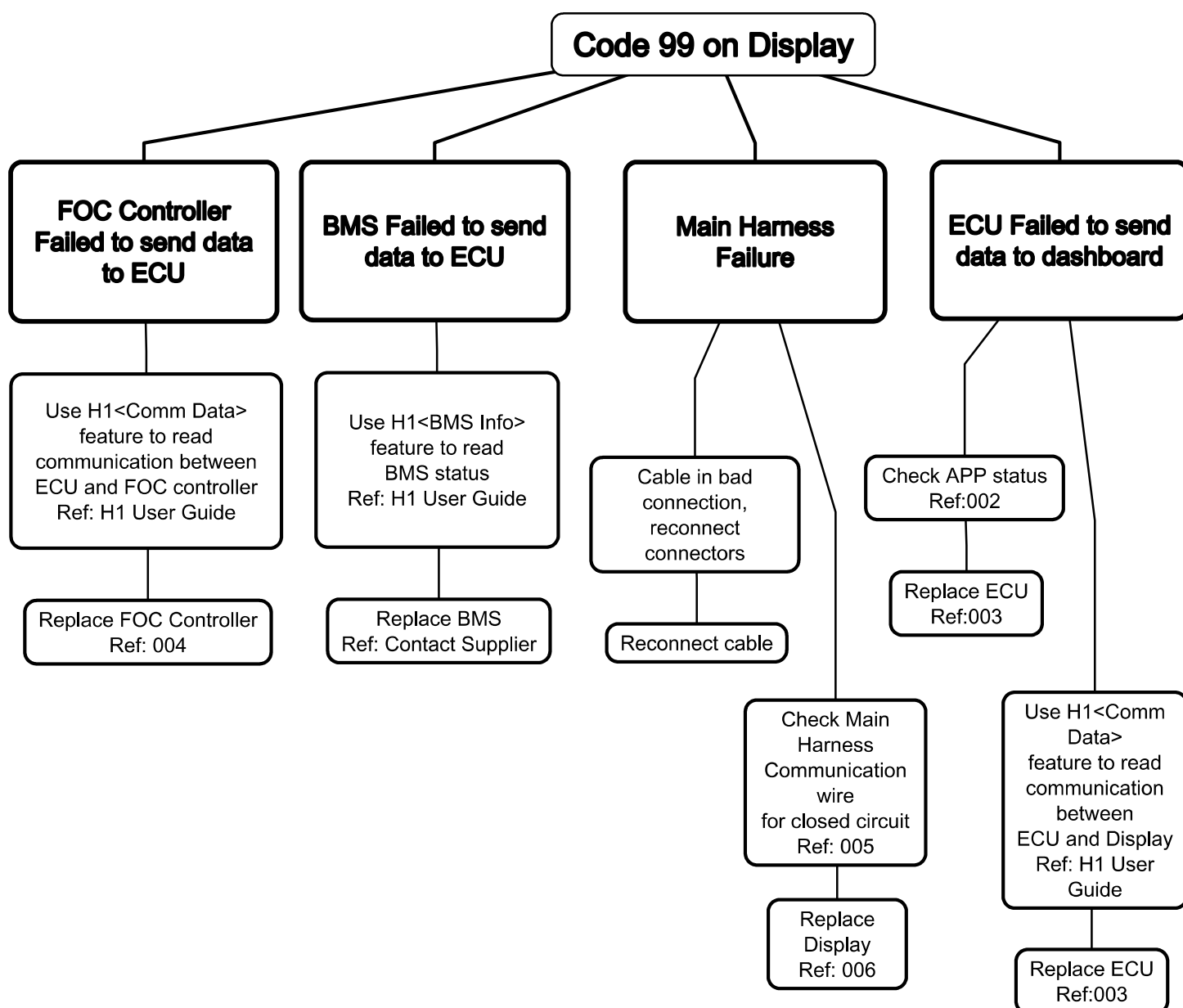
Update ECU program to Data
Deactivated program to Cancel 67
Warning Code
Ref: H1 User Guide

Use H1 to check Signal Strength Ref: H1 User Guide

Move the scooter to open ground and wait for 10 minutes for better signal reception

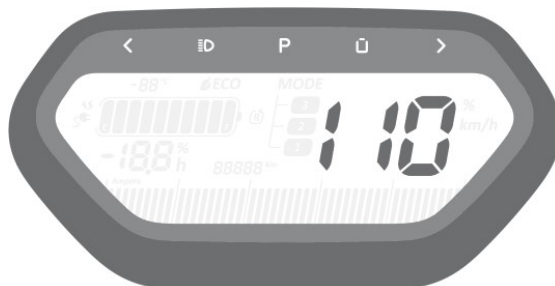


Diagnostic Code - 99 on display





Diagnostic Code - 110 on display



Fault Code 110: FOC Controller Failure

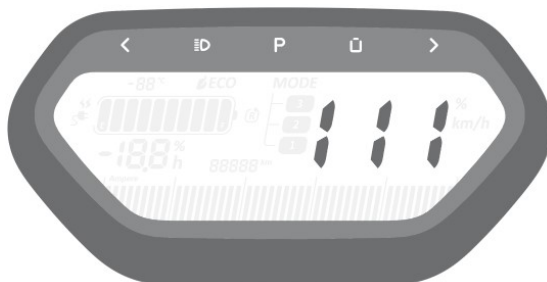
Check FOC controller
indicator status
Ref: 001

Replace FOC Controller
Ref: 004

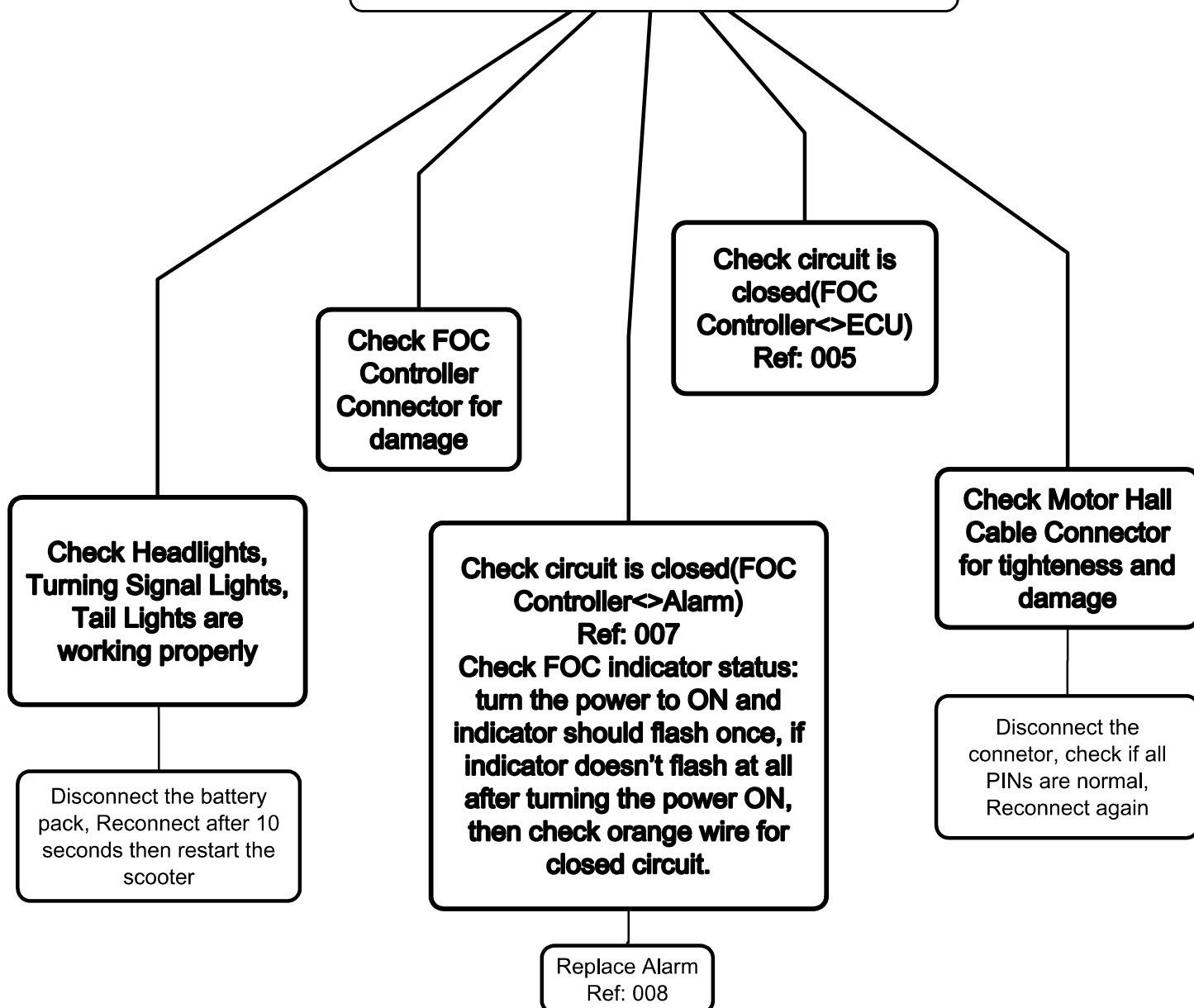
Replace FOC Controller
Ref: 004



Diagnostic Code - 111 on display



Fault Code 111 FOC : Controller Verification Failure





Diagnostic Code - 120 on display



Fault Code 120 Motor Failure

**Check FOC
Controller
Indicator status
Ref: 001**

Flashing Frequency: 5times
Motor Hall sensor failed

Replace Motor
Ref: 009

Flashing Frequency: 7times
One or more phase cables
missing

Replace Motor
Ref: 009

Motor Hall cable in bad
connection with FOC controller
connector (please check both
connectors between FOC
Controller and Motor)
Please pay attention to vehicles
produced before 12.2016)

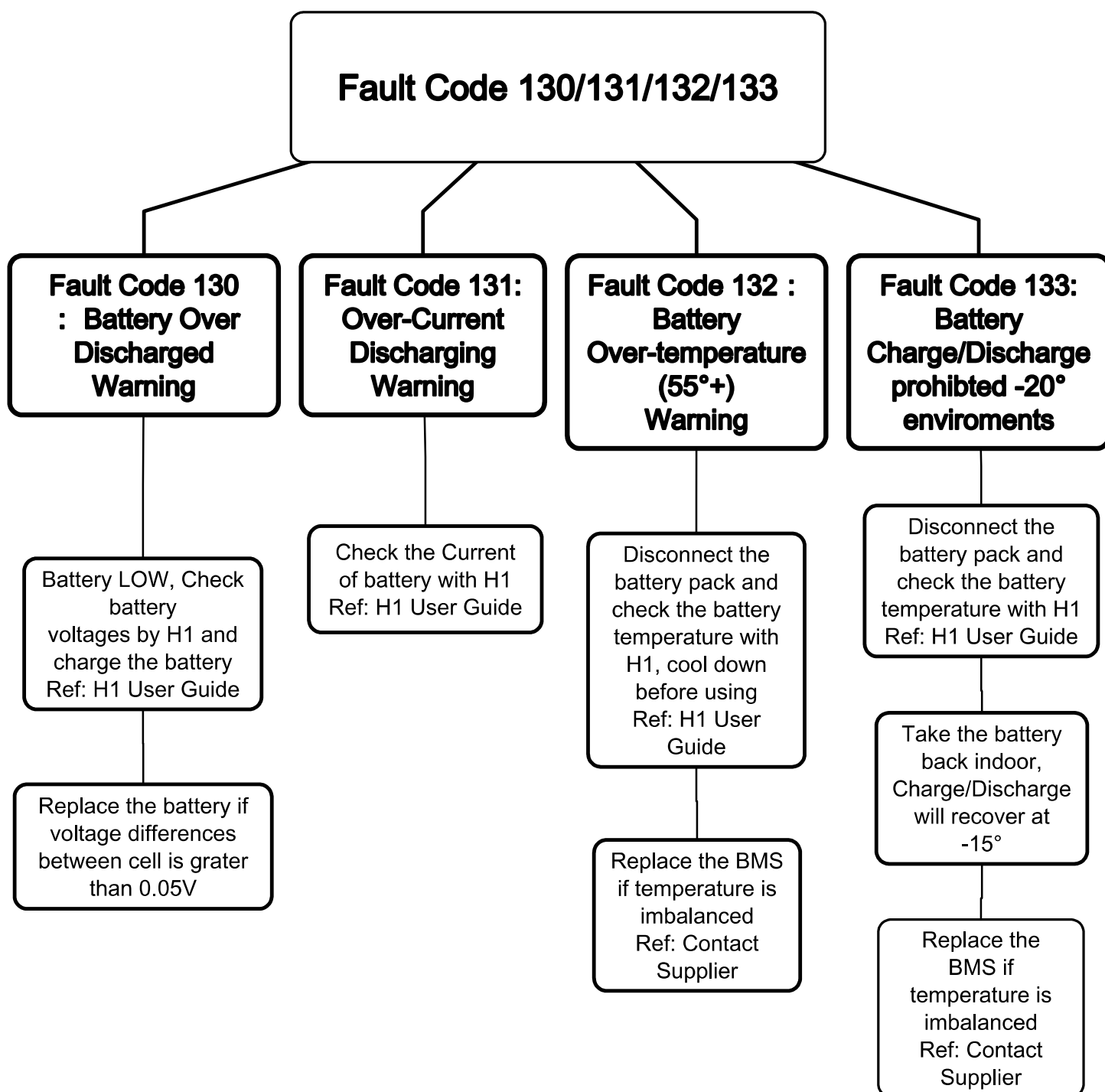
Disconnect the Motorl Hall sensor
cable and reconnect again



Diagnostic Code - 130/131/132/133 on display



Fault Code 130/131/132/133

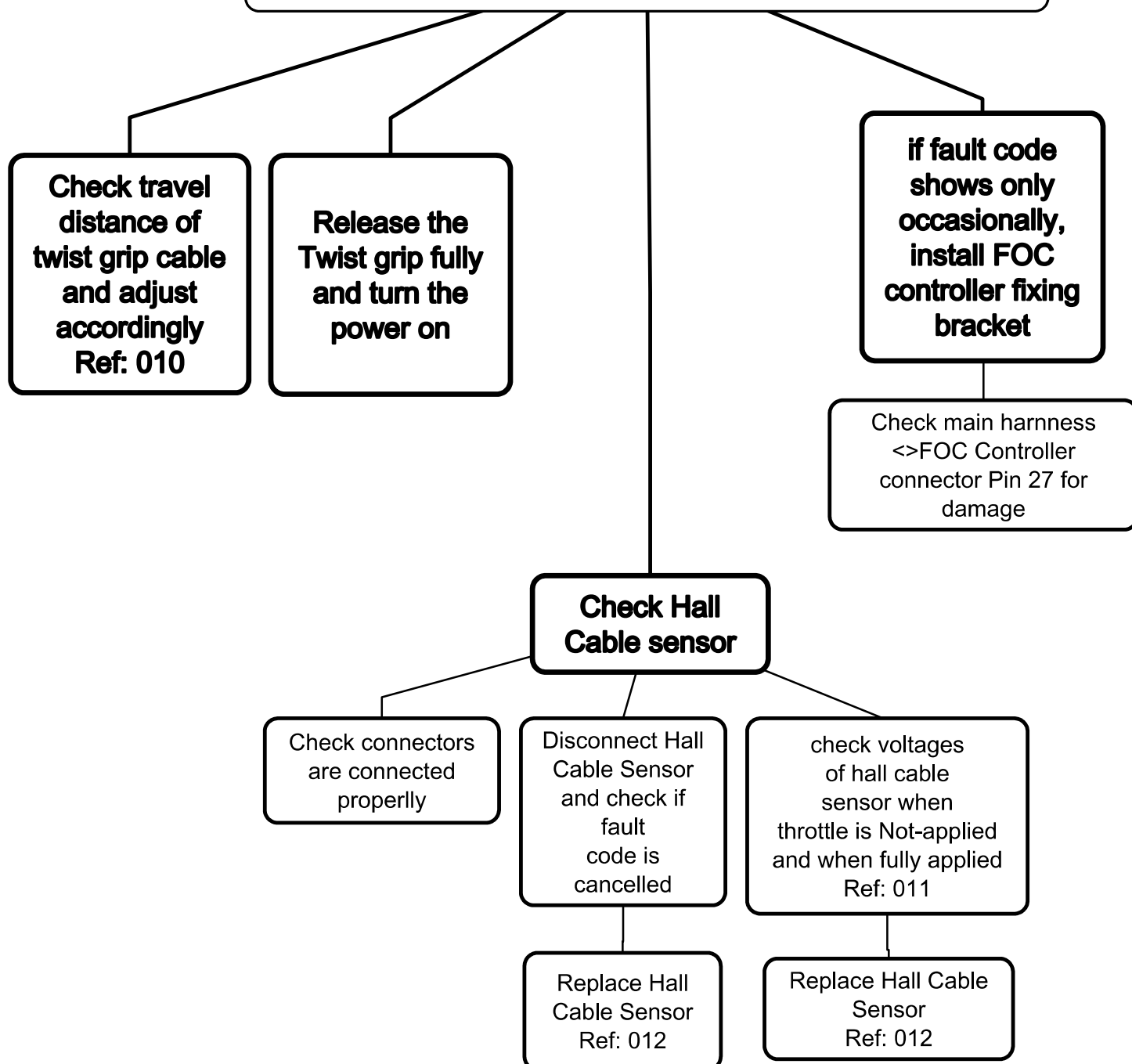




Diagnostic Code - 140 on display



Fault Code 140: Hall Cable Sensor Failure





Diagnostic Code - 161 on display

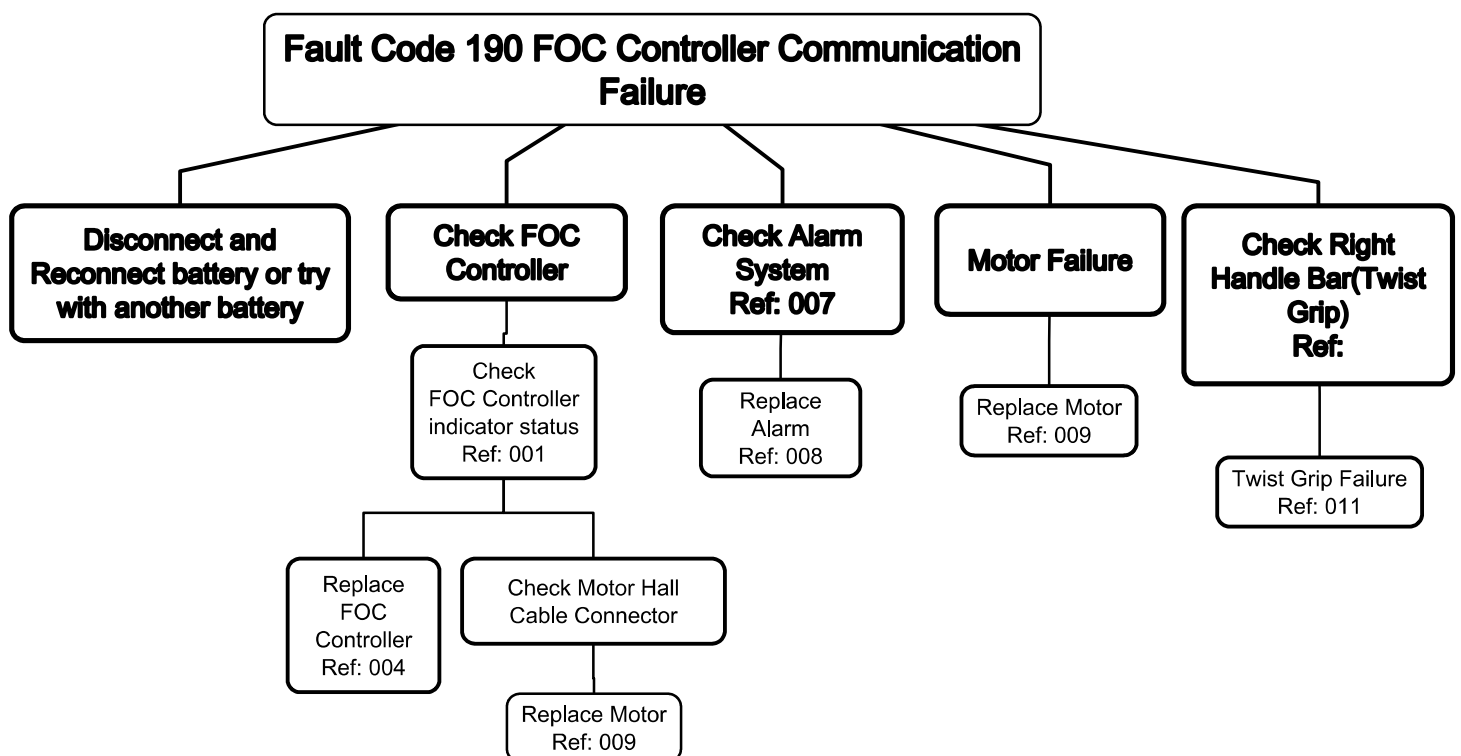


Fault Code 161: Scooter has been locked by remote command

Contact Supplier to unlock



Diagnostic Code - 190 on display





Diagnostic Code - 191 on display

